

# TENDER BULLETIN

NO. 20/2016/17 FY

19 August 2016



# LIMPOPO

**PROVINCIAL GOVERNMENT**  
REPUBLIC OF SOUTH AFRICA

This document is also available on the internet on the following website:

[www.limtreasury.gov.za](http://www.limtreasury.gov.za)

**Provincial Supply Chain Management Office**

## TABLE OF CONTENTS

	<b>Page No.</b>
1. REPORTING FRAUDULENT AND CORRUPT ACTIVITIES.....	03
2. INSTRUCTIONS.....	.04
3. BID INVITATIONS FOR SUPPLIES, SERVICES AND DISPOSALS .....	05 -08
5. SPECIAL NOTICES.....	09-11
ANNEXURE 1: ADDRESS LIST AND CONTACT DETAILS: PROVINCIAL DEPARTMENTS.....	12-13
ANNEXURE 2: ADDRESS LIST AND CONTACT DETAILS: PUBLIC ENTITIES.....	14
ANNEXURE 3: ADDRESS LIST AND CONTACT DETAILS: PROVINCIAL TREASURY TENDER ADVISE CENTRES .....	15
ANNEXURE 4: ADDRESS LIST AND CONTACT DETAILS: SATELLITE OFFICES .....	16

**REPORT**

**FRAUDULENT & CORRUPT ACTIVITIES ON GOVERNMENT PROCUREMENT SYSTEM**

---

**National Anti-Corruption @ 0800 701 701**

**Security and Investigating Services – Limpopo Provincial Treasury**

**@ 015 298 7196**

---

**ALL COMPLAINTS/CONCERNS RELATED TO SCM NON-COMPLIANCE MUST BE REPORTED TO:**

**LIMPOPO PROVINCIAL TREASURY**

**PRIVATE BAG X 9486**

**POLOKWANE**

**0700**

**PROVINCIAL TREASURY, FINANCE HOUSE**

**56 – 58 PAUL KRUGER STREET**

**POLOKWANE**

## 2. INSTRUCTIONS

1. Bidders are advised to read the entire tender bulletin.
2. Tenders for procurement of supplies, services and disposals are categorized as follows:

### **SUPPLIES**

- Accommodation, leasing of
- Audio visual equipment
- Building material
- Chemicals: Agricultural/Forestry/  
Laboratory/Water Care
- Clothing/Textiles
- Computer equipment
- Computer software
- Electrical equipment
- Electronic equipment
- Furniture
- General
- Medical
- Office equipment: Labour-saving devices
- Perishable provisions
- Stationary/printing
- Steel
- Timber
- Vehicle (all types)
- Workshop equipment

### **SERVICES**

- Building
- Civil
- Electrical
- Functional (including cleaning-,  
and security services)
- General
- Maintenance of electrical, mechanical  
equipment and plumbing
- Mechanical
- Professional
- Repair and maintenance of vehicles
- Transport

### **DISPOSALS**

- Clothing and textiles
- Furniture
- General
- Scrap metal
- Vehicles

3. Bid documents are generally available in English only.
4. The address where a bid document is available from and where it must be submitted to may differ.
5. The addresses at which bid documents may be obtained and to which tenders must be posted, appear in Annexure 1.
6. The address list of various Supply Chain Management Tender Advice Centers at which bid documents and tender bulletins may also be obtained, appear in Annexure 3; and
7. The address list of Supply Chain Management satellite offices at which tender bulletins may also be obtained, appear in Annexure 4

**3. BID INVITATIONS FOR SUPPLIES, SERVICES AND DISPOSALS**

BID NO.	DESCRIPTION OF SERVICE OR SUPPLIES	CONTACT DETAILS	BID DOCUMENT PRICE (NON-REFUNDABLE)	DUE AT 11H00	BID DOCUMENTS OBTAINABLE FROM	POST OR DELIVER BIDS TO
VIVET No 33/2016	Rendering of security service Makwarela Campus  <b>Compulsory Briefing session:</b> Makwarela Campus <b>Date:</b> 2016./08/15 <b>Time:</b> 11H30  <b>Vhembe College (T.V.E.T)</b>	<b>ADMINISTRATION PROCESS</b> SR Manena  <b>TECHNICAL ASPECTS</b>	R100-00	05/09/2016	118	118
VIVET No 34/2016	Rendering of security service Mavhoi Campus  <b>Compulsory Briefing session:</b> Mavhoi Campus <b>Date:</b> 2016./08/16 <b>Time:</b> 14H00  <b>Vhembe College (T.V.E.T)</b>	<b>ADMINISTRATION PROCESS</b> SR Manena  <b>TECHNICAL ASPECTS</b>	R100-00	05/09/2016	118	118
VIVET No 35/2016	Rendering of security service Mashamba Campus  <b>Compulsory Briefing session:</b> Mashamba Campus <b>Date:</b> 2016./08/16 <b>Time:</b> 10H00  <b>Vhembe College (T.V.E.T)</b>	<b>ADMINISTRATION PROCESS</b> SR Manena  <b>TECHNICAL ASPECTS</b>	R100-00	05/09/2016	118	118
VIVET No 36/2016	Rendering of security service Thengwe Campus  <b>Compulsory Briefing session:</b> Thengwe Campus <b>Date:</b> 2016./08/15 <b>Time:</b> 09H00	<b>ADMINISTRATION PROCESS</b> SR Manena  <b>TECHNICAL ASPECTS</b>	R100-00	05/09/2016	118	118

VIVET No 37/2016	Rendering of security service Central Office  <b>Compulsory Briefing session:</b> Central Office <b>Date: 2016./08/15</b> <b>Time: 13H00</b>  <b>Vhembe College (T.V.E.T)</b>	<b>ADMINISTRATION PROCESS</b> <b>SR Manena</b>  <b>TECHNICAL ASPECTS</b>	R100-00	05/09/2016	118	118
VIVET No 38/2016	Rendering of security service Tshisimani Campus  <b>Compulsory Briefing session:</b> Tshisiman Campus <b>Date: 2016./08/15</b> <b>Time: 15H00</b>  <b>Vhembe College (T.V.E.T)</b>	<b>ADMINISTRATION PROCESS</b> <b>SR Manena</b>  <b>TECHNICAL ASPECTS</b>	R100-00	05/09/2016	118	118
DSAC2016/17- B952	Rendering of accommodation, meals outdoor activities, hall and break-way rooms during National Youth Camp- 2016  <b>Compulsory Briefing session:</b> 21 Biccard Street, Olympic Towers Building (Ground Atrium) Polokwane Limpopo Province <b>Date: 2016./08/26</b> <b>Time: 10H00</b>  <b>Sports, Arts and Culture</b>	<b>ADMINISTRATION PROCESS</b> Mabasa Lawrence @ (015) 284 4093, Mangena Phyllis @ (015) 284 4087 and or Pilusa Martin at (015) 284 4066  <b>TECHNICAL ASPECTS</b> Ms.Ledwaba Mpho @ (015) 284 4028	R80-00	12/09/2016	108	108
RAL/T725/2016	Replacement of flood damaged bridge on Road D1483 from Musina to Mapungubwe to Pontdrift in the Vhembe Distrct of Limpopo  <b>CIDB GRADING</b> : 5CEPE or 6CE or Higher  <b>Compulsory Briefing session:</b> <b>Venue:</b> Flood damaged Bridge 4208 (29 32°40.15" E22 13°43.54"S <b>Date:</b> 2016/08/30 <b>Time:</b> 11H00  <b>Road Agency Limpopo</b>	<b>ADMINISTRATION PROCESS</b> Mr. Matsobane Dinala Tel no: 015 284 4628 or by email @ dinalamr@ral.co.za  <b>TECHNICAL ASPECTS</b> Mr.E Mamabolo Tel no: 015 297 1045 Cell no: 083 275 3901 Email: admin.polokwane@sfce.co.za	R330-00	13/09/2016	116	116
RAL/T7642016	Installation of drainage structures and regravelling of Road D171 in the Waterberg District of Limpopo Province  <b>CIDB GRADING</b> : 6CEPE or	<b>ADMINISTRATION PROCESS</b> Mr. Matsobane Dinala Tel no: 0152844628 or by email @ dinalamr@ral.co.za	R330-00	15/09/2016	116	116

	<p>7CE or Higher</p> <p><b>Compulsory Briefing session:</b>  <b>Venue:</b> Corner of Road P198/1 and Road D171 between Vaalwater and Lephale (S:2357°39.98"E:2757°49.23")  <b>Date:</b> 2016/08/31  <b>Time:</b> 11H00</p> <p><b>Road Agency Limpopo</b></p>	<p><b>TECHNICAL ASPECTS</b>  Mr. NS Aphane</p> <p>Tel no: 015 29516068  Cell no: 082 807 2763  Email:admin.polokwane@aphane.co.za</p>				
RAL/T765/2016	<p>Installation of drainage structures and regravelling (design and contract) of Road D3699, D3674, D3910, D3703 and D3704 in the Vhembe District of Limpopo Province</p> <p><b>CIDB GRADING :</b> 6CEPE or 7CE or Higher</p> <p><b>Compulsory Briefing session:</b>  <b>Venue:</b> Intersection of Road D3701 and D3703 @ Tshungani B ,(GPS co-ordinates:S:22.471903,E:30.590067))  <b>Date:</b> 2016/08/30  <b>Time:</b> 10H00</p> <p><b>Road Agency Limpopo</b></p>	<p><b>ADMINISTRATION PROCESS</b>  Mr. Matsobane Dinala  Tel no: 0152844628 or by email @ dinalamr@ral.co.za</p> <p><b>TECHNICAL ASPECTS</b>  Mr. Mokhothu  Tel no: 015 284 4600  Cell no: 063 6871675  Email:mokhothub@ral.co.za</p>	R80-00	13/09/2016	116	116
RAL/T771/2016	<p>Installation of drainage structures and regravelling (design and contract) of Road D1394 in the Waterberg District of Limpopo Province</p> <p><b>CIDB GRADING :</b> 6CEPE or 7CE or Higher</p> <p><b>Compulsory Briefing session:</b>  <b>Venue:</b> Intersection of Road P1/4and D1394(GPS coordinates:S:24.765797,28.348860)  <b>Date:</b> 2016/09/01  <b>Time:</b> 10H00</p> <p><b>Road Agency Limpopo</b></p>	<p><b>ADMINISTRATION PROCESS</b>  Mr. Matsobane Dinala  Tel no: 0152844628 or by email @ dinalamr@ral.co.za</p> <p><b>TECHNICAL ASPECTS</b>  Mr. Mokhothu  Tel no: 015 284 4600  Cell no: 063 6871675  Email:mokhothub@ral.co.za</p>	R80-00	15/09/2016	116	116
RAL/T772/2016	<p>Installation of drainage structures and regravelling (design and contract) of Road D1939 in the Waterberg District of Limpopo Province</p> <p><b>CIDB GRADING :</b> 6CEPE or 7CE or Higher</p>	<p><b>ADMINISTRATION PROCESS</b>  Mr. Matsobane Dinala  Tel no: 0152844628 or by email @ dinalamr@ral.co.za</p>	R80-00	15/09/2016	116	116

	<p><b>Compulsory Briefing session:</b>  <b>Venue:</b> Intersection of Road D1005 and Road R1939 off the R33 from Vaalwater to Lephale(GPS co-ordinates:S:23.919529,31.036356))</p> <p><b>Date: 2016/09/01</b>  <b>Time: 11H00</b></p> <p><b>Road Agency Limpopo</b></p>	<p><b>TECHNICAL ASPECTS</b>  Mr. Mokhothu  Tel no: 015 284 4600  Cell no: 063 6871675  Email:mokhothub@ral.co.za</p>				
RAL/T774/2016	<p>Installation of drainage structures and regravelling (design and contract) of Road D4424 in the Mopani District of Limpopo Province</p> <p><b>CIDB GRADING</b> : 6CE or 5CE PEor Higher</p> <p><b>Compulsory Briefing session:</b>  <b>Venue:</b> Intersection of Road D4424 to Matiko Xikaya and Road R71 to Phalaborwa (GPS coordinates:S:22,471903,30.590067)  <b>Date: 2016/09/02</b>  <b>Time: 11H00</b>  <b>Road Agency Limpopo</b></p>	<p><b>ADMINISTRATION PROCESS</b>  Mr. Matsobane Dinala  Tel no: 0152844628 or by email @ dinalamr@ral.co.za</p> <p><b>TECHNICAL ASPECTS</b>  Mr. Mokhothu  Tel no: 015 284 4600  Cell no: 063 6871675  Email:mokhothub@ral.co.za</p>	R80-00	16/09/2016	116	116



#### 4. SPECIAL NOTICES

#### 4.1 (SCM Advice Centers): LIMPOPO PROVINCIAL TREASURY ADVERTISEMENTS OF LIMPOPO CSD CALL CENTRE LINES FOR SUPPLIERS IN THE TENDER BULLETIN:-

##### LIMPOPO CSD CALL CENTRE LINES FOR SUPPLIERS

DISTRICT	CALL CENTRE NUMBER	OFFICIAL RESPONSIBLE	TIME
Capricorn	015 291 8737	Mr Holeni TI	7H30 TO 16H30
Mopani	015 812 0256	Ms Nxumalo P	7H30 TO 16H30
Sekhukhune	013 265 1071	Mrs Morena MM	7H30 TO 16H30
Vhembe	015 962 0014	Mrs Nefolovhodwe Q	7H30 TO 16H30
Waterberg	014 717 1376	Mrs Tsatsi AT	7H30 TO 16H30

#### 4.2. SEKHUKHUNE SUPPLY CHAIN MANAGEMENT ADVICE CENTRE (Centralised Supplier Database Roadshow program)

DATE	MUNICIPALITY	VENUE	TARGET	TIME
25/08/2016	Fetakgomo	Mohlaletsi Com. Hall	SUPPLIERS	10H00

For more information please contact Mr Sehale MS at Tel.013 2651344

#### 4. 3 BID INVITATIONS CANCELLED

#### OUTCOMES IN RESPECT OF BIDS FINALISED

The following bids are cancelled:

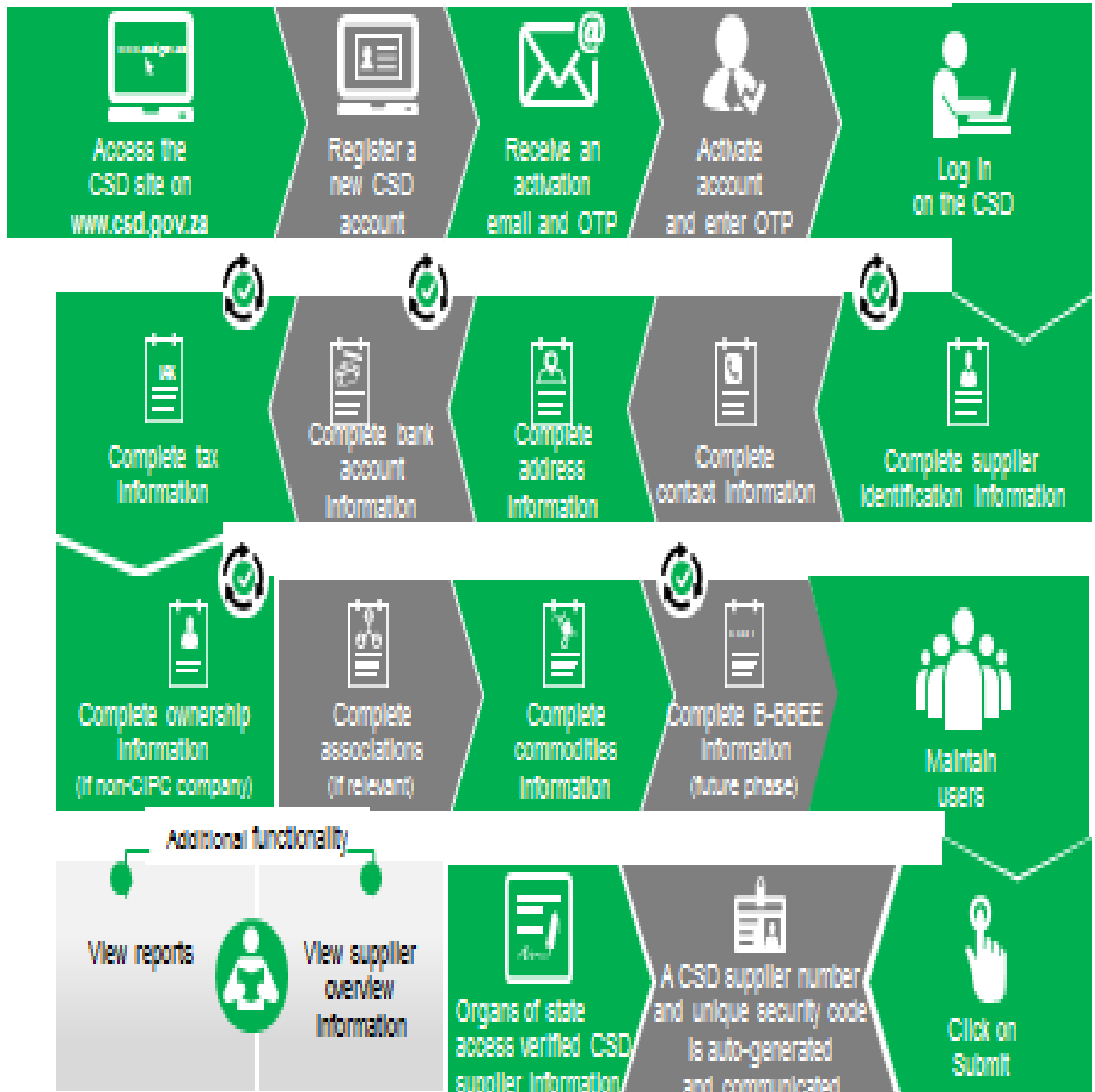
Department of Co-Operative Governance, Human Settlements and Traditional Affairs

No.	Bid Number	Description	Reason
1.	COGHSTA B18/2015-16FY	Appointment of service provider for Recognition of Prior Learning	No service provider qualified for appointment
2.	COGHSTA B19/2015-16FY	Appointment of resources for maintenance of systems (Information and Communication Technology Services and Skills) for a period of three (3) years	No service provider qualified for appointment

#### 4.4. ADDENDUM : DEPARTMENT OF AGRICULTURE ( BID NO. ACDP 16/12: THE CONSTRUCTION OF A 10HA CENTRE PIVOT IRRIGATION SYSTEM AT MASOGA TEFFU FARM IN THE BLOUBERG MUNICIPALITY OF THE CAPRICORN DISTRICT)

TENDER BULLETIN NO.	BID NO	PROJECT DESCRIPTION	DATE ADVERTISE D	DATE CLOSED	REASON FOR ADDENDUM
23/2015/16	ACDP 16/12	THE CONSTRUCTION OF A 10HA CENTRE PIVOT IRRIGATION SYSTEM AT MASOGA TEFFU FARM IN THE BLOUBERG MUNICIPALITY OF THE CAPRICORN DISTRICT	12 AUGUST 2016	13 SEPTEMBER 2016	CIDB GRADING WAS NOT INCLUDED ON THE BULLETIN NO. 19 OF 2016/17, FY 12 AUGUST 2016. THE CIDB IS 4CE OR HIGHER

# Supplier Self-Registration Process



Auto verification of supplier information with SARS, CIPC etc.

**ANNEXURE 1: ADDRESS LIST AND CONTACT DETAILS: LIMPOPO PROVINCIAL DEPARTMENTS**

UNIQUE REF. NO.	BID DOCUMENT REFERENCE	CONTACT DETAILS	DOCUMENTS SOLD AT:	DOCUMENTS DEPOSITED AT
100	DSDP	Tel: 015 293 6000 Fax: 015 293 6211 Website: <a href="http://www.limpopo.gov.za">www.limpopo.gov.za</a>	<b>Department of Social Development</b> , Office No. D3 Ground Floor, Old Capricorn Building, 18 College Street, POLOKWANE and all Provincial Treasury Tender Advice Centers	Deposited in the box located at Department of Health and Social Development, 18 College Street, Polokwane
101	LPT	Tel: 015 298 7000 Fax: 015 295 7010 Website: <a href="http://www.limpopo.gov.za">www.limpopo.gov.za</a>	<b>Provincial Treasury</b> 56 – 58 Paul Kruger Street, POLOKWANE and all Provincial Treasury Tender Advice Centers	Deposited in the bid box located outside a guard house at Ismini Towers, 46 Hans Van Rensburg Street, Polokwane
101A	TC/LP	Tel: 015 291 8400 Fax: 015 295 3310 Website: <a href="http://www.limpopo.gov.za">www.limpopo.gov.za</a>	<b>Provincial Treasury</b> 56 – 58 Paul Kruger Street, POLOKWANE and all Provincial Treasury Tender Advice Centers	Deposited in the bid box located in the main entrance, Finance House Building, 56-58 Paul Kruger Street, Polokwane
102	PRDP	Tel: 015 287 6000 Fax: 015 295 3840 Website: <a href="http://www.limpopo.gov.za">www.limpopo.gov.za</a>	<b>Office of the Premier</b> , 40 Hans van Rensburg Street, POLOKWANE and all SCM Advice Centers	Deposited in the bid box located at Mowaneng Building, 40 Hans van Rensburg Street, Polokwane
103	HEDP	Tel: 015 293 6000 Fax: 015 293 6211 Website: <a href="http://www.limpopo.gov.za">www.limpopo.gov.za</a>	<b>Department of Health</b> , Office No. D3 Ground Floor, Old Capricorn Building, 18 College Street, POLOKWANE and all Provincial Treasury Tender Advice Centers	Deposited in the box located at Department of Health and Social Development, 18 College Street, Polokwane
104	LPEDT	Tel: 015 290 7600/1 Fax: 015 297 4494 Website: <a href="http://www.limpopo.gov.za">www.limpopo.gov.za</a>	<b>Department of Education</b> , Corner 113 Biccard and 24 Excelsior Streets, POLOKWANE and all Provincial Treasury Tender Advice Centers	Deposited in the bid box located in the main entrance of corner 113 Biccard Street and Excelsior Street, Polokwane
105	PUDP	Tel: 015 295 1000 Fax: 015 295 1163 Website: <a href="http://www.limpopo.gov.za">www.limpopo.gov.za</a>	<b>Department of Roads &amp; Transport</b> , 40 Paul Kruger Street, POLOKWANE and all Provincial Treasury Tender Advice Centers	Deposited in the bid box located at 1 <sup>st</sup> Floor, Paul Kruger Wing, 40 Paul Kruger Street, Polokwane
106	DSSL	Tel: 015 290 2900 Fax: 015 291 4452 Website: <a href="http://www.limpopo.gov.za">www.limpopo.gov.za</a>	<b>Department of Safety, Security and Liaison</b> , 32 Schoeman Street, POLOKWANE and all Provincial Treasury Tender Advice Centers	Deposited in the bid box located in the main entrance of 32 Schoeman Street, Polokwane
107	COGHSTA	Tel: 015 294 2000 Fax: 015 295 4190 Website: <a href="http://www.limpopo.gov.za">www.limpopo.gov.za</a>	<b>Department of Co-Operative Governance, Human Settlements &amp; Traditional Affairs</b> , 28 Market Street, Office No. G 74, Ground Floor, Polokwane.	Deposited in the bid box located at Hensa Towers, Cnr of Rabe and Landdros Mare Streets, Polokwane
108	DSAC	Tel: 015 284 4000 Fax: 015 284 4514 Website: <a href="http://www.limpopo.gov.za">www.limpopo.gov.za</a>	<b>Department of Sport, Arts and Culture</b> Olympic Towers, Corner Rabe and Biccard Street, POLOKWANE and all Provincial Treasury Tender Advice Centre	Deposited in the bid box located in the main entrance of Olympic Towers, Corner 21 Rabe and Biccard Street, Polokwane
109	LEDET	Tel: 015 293 8300 Fax: 015 293 8319 Website: <a href="http://www.limpopo.gov.za">www.limpopo.gov.za</a>	<b>Department of Economic Development, Environment &amp; Tourism</b> , 90 Bok Street, POLOKWANE and all SCM Advice Centers	Deposited in the bid box located at Evridiki Towers, 19 Biccard Street, Polokwane

UNIQUE REF. NO.	BID DOCUMENT REFERENCE	CONTACT DETAILS	DOCUMENTS SOLD AT:	DOCUMENTS DEPOSITED AT
110	LDPW & WODP	Tel: 015 284 7000 Fax: 015 284 7031 Website: <a href="http://www.limpopo.gov.za">www.limpopo.gov.za</a>	<b>Department of Public Works</b> , Works Towers, 43 Church Street, POLOKWANE and all Provincial Treasury Tender Advice Centers	Deposited in the bid box located at Corner Blaawberg and River Street Ladanna Polokwane 0699 Private Bag X9490 Polokwane 0700
111	ACDP	Tel: 015 294 3000/30/60/90/20 Fax: 015 294 4506 Website: <a href="http://www.limpopo.gov.za">www.limpopo.gov.za</a>	<b>Department of Agriculture</b> , Temo Towers, 69 Biccard Street, POLOKWANE and all Provincial Treasury Tender Advice Centers	Deposited in the bid box located in the main entrance of AgriVillage, 69 Biccard Street, Polokwane

**ANNEXURE 2: ADDRESS LIST AND CONTACT DETAILS: LIMPOPO PUBLIC ENTITIES**

UNIQUE REF. NO.	BID DOCUMENT REFERENCE	CONTACT DETAILS	DOCUMENTS SOLD AT:	DOCUMENTS DEPOSITED AT
112	RFB: LIMP	Tel: 015 293 3621 Fax: 015 293 3660 Website: <a href="http://www.golimpopo.co">www.golimpopo.co</a>	<b>State Information Technology Agency (SITA)</b> Limpopo Office, Moolman Building, 27 Market Street, POLOKWANE, 0699	Bid box located in the Main Entrance of Moolman Building, 27 Market Street, Polokwane
113	LTA	Tel: 015 293 3600 Fax: 015 293 3655 Website: <a href="http://www.golimpopo.com">www.golimpopo.com</a>	<b>Limpopo Tourism Agency</b> , ERF 92/688, Portion 2 Southern Gateway, Ext 4, N1 Main Road, Polokwane 0699	Bid box located in the offices ERF 92/688, Portion 2 Southern Gateway, Ext 4, N1 Main Road, Polokwane 0699
114	LGB	Tel: 015 295 5581 Fax: 015 295 3566 Website: <a href="http://www.lgb.org">www.lgb.org</a>	<b>Limpopo Gambling Board</b> , 08 Hans van Rensburg Street, POLOKWANE, 0700 from 08H30 to 16H00	Bid box located in the main entrance, ground floor, 08 Hans van Rensburg Street, Polokwane 0700
115	LEDA	Tel: 015 633 4700 Fax: 015 633 4854 Website: <a href="http://www.leda.co.za">www.leda.co.za</a>	<b>Limpopo Economic Development Agency</b> Enterprise Development Finance, Main Road, Lebowakgomo	Bid box located in the main entrance, Enterprise Development Finance, Main Road, Lebowakgomo
116	RAL	Tel: 015 284 4600 Fax: 015 284 4701 Website: <a href="http://www.ral.co.za">www.ral.co.za</a>	<b>Road Agency Limpopo (RAL)</b> , RAL Towers, 26 Rabe Street, POLOKWANE, 0700	Bid box located in the entrance foyer (ground floor) of RAL Towers, at 26 Rabe Street, Polokwane
117	GAAL	Tel: 015 288 0122 Fax: 015 288 0346 Website: <a href="http://www.gaal.co.za">www.gaal.co.za</a>	<b>Gateway Airports Authority Limited</b> , N1 Road to Louis Trichardt, Army Base, POLOKWANE International Airport, Polokwane, 0700	Bid box located in the main entrance, ground floor of administration building, Polokwane International Airport, Army Base
118	VIVET	Tel: 015 963 3156 Fax: 015 963 3154 Website: <a href="mailto:www.fetcol@mweb.co.za">www.fetcol@mweb.co.za</a>	<b>Vhembe FET College</b> , Stand No. 203, Unit A, Sibasa, 0970, Limpopo Province	Vhembe FET College, Central Office, Private Bag X2136, SIBASA 0970
119	WTVET	Tel: 015 491 8581 / 8602 Fax: 015 491 8579 Website: <a href="mailto:www.procurement@waterbergcollege.co.za">www.procurement@waterbergcollege.co.za</a>	<b>Waterberg FET College</b> , Central Office, 36 Hooge Street, Mokopane 0600	<b>Waterberg FET College</b> , Central Office, 36 Hooge Street, Mokopane Private Bag X 2449, Mokopane 0600

**ANNEXURE 3: ADDRESS LIST AND CONTACT DETAILS: PROVINCIAL TREASURY TENDER ADVICE CENTRES**

(Tender bulletins and bid documents are obtainable from the following Centers):

<b>PROVINCIAL TREASURY SUPPLY CHAIN MANAGEMENT ADVICE CENTRES</b>	
<p><b>HEAD OFFICE</b></p> <p>Provincial Supply Chain Management Office 56 &amp; 58 Paul Kruger Street POLOKWANE Private Bag x9494 <b>POLOKWANE, 0700</b> <b>Tel No. (015) 291 8400</b></p> <p>Contact: <b>Ms. M.B. Malope</b> @ Tel: 015 291 8717/6</p>	<p><b>Capricorn SCM Advice Centre</b></p> <p>Limpopo Provincial Treasury 56 &amp; 58 Paul Kruger Street Private Bag x9494 <b>POLOKWANE, 0700</b> <b>Tel No. (015) 291 8400</b></p> <p>Contact Person: <b>Ms. M.M. Masindi</b></p>
<p><b>Vhembe SCM Advice Centre</b></p> <p>Limpopo Provincial Treasury Government Building Complex Office No. E006 <b>THOHOYANDOU, VENDA</b> Tel: (015) 962 1752 Fax: (015) 962 1282</p> <p>Contact Person: <b>Ms. A. Budeli</b></p>	<p><b>Mopani SCM Advice Centre</b></p> <p>Limpopo Provincial Treasury Private Bag X 1973 <b>GIYANI, 0826</b> Tel: (015) 812 0149 Fax: 086 219 7905</p> <p>Contact Person: <b>Mr. M. B. Mbedzi</b></p>
<p><b>Waterberg SCM Advice Centre</b></p> <p>Limpopo Provincial Treasury 98 Nelson Mandela Street Decimale Building <b>MODIMOLLE</b> Tel: (014) 717 5837 Fax: (014) 717 5670</p> <p>Contact Person: <b>Mr. P.E. Mogoroga</b></p>	<p><b>Sekhukhune SCM Advice Centre</b></p> <p>Limpopo Provincial Treasury Lefa Centre, Schoonoord Road <b>JANE FURSE</b> Tel: (013) 265 1344 Fax: (013) 265 1354</p> <p>Contact Person: <b>Mr. M.S. Sehale</b></p>

#### ANNEXURE 4: ADDRESS LIST AND CONTACT DETAILS: SATELLITE OFFICES

(Tender bulletins are obtainable from the following centers)

CAPRICORN	VHEMBE	MOPANI	WATERBERG	SEKHUKHUNE
Lebowakgomo LIBSA	Dzanani Revenue Office Tel. No. (015) 970 4969	Namakgale Revenue Office Tel. No. (015) 761 3119	LIBSA Thabazimbi: No.08 Riet Bok Street Tel. No. (014) 772 2437	Tubatse LIBSA Tubatse Municipality Tel. No. (013) 231 8530
Seshego (Economic Dev. Offices Zone 8) Tel. No. (015) 223 7990	Malamulele Revenue Office Tel. No. (015) 871 0608	Ritavi DCO Tel. No. (015) 303 0455	LIBSA Lephalale No. 3A Venter Street Tel. No. (014) 763 2834	Fetakgomo LIBSA Fetakgomo Municipality Tel. No. (015) 622 8904
Ga-Thoka (Department of Economic Development)	Musina Revenue Office Tel. No. (015) 534 2713	Naphuno Magistrate Office Tel. No. (015) 355 4972	Bela-Bela Local Municipality (Bela-Bela) Tel. No. (014) 736 8000	Atok Thusong Service Centre Atok
Senoamadi Complex- Morebeng next to Taxi Rank-Economic Development Offices Contact Mr. Pheha @ 084 602 423	Mutale Revenue Office Tel. No. 072 252 7153	Lulekani Magistrate Offices Tel. No. (015) 783 0486	Mookgophong Local Municipality (Mookgopong) Tel. No. (014) 743 1111	Maatla-ke batho LIBSA Marblehall Tel. No. (013) 261 2642
Bochum: LIBSA	Soutpansberg Revenue Office Tel. No. (015) 516 0002	Economic Development Offices in Tzaneen 20b Peace Street, Cnr Peace and Hermanus Tel. No. (015) 307 1195	LIBSA Mokopane 90 Retief Street Tel. 015 491 8582 Fax: 015 491 8584	SEDA Groblersdal Tel. No. (013) 262 3651
Mathabatha Tribal Authority Ga-Mathabatha	Tshilwavhusiku Revenue Office (015) 571 5277	Bolobedu Revenue Office Tel. No. (015) 328 3377		
Mafefe Tribal Authority MAFEFE	Tshitale Revenue Office Tel. No. (015) 975 1717	Hlanganani Revenue Office operating within Khomanani Tribal Authority at Majosi. Tel. No. 072 304 3916		
	Vuwani- Revenue Office Tel. No. 072 058 1910			